

## Installation guide

RIBTEC® programs for the design of structural members are licensed and protected using the technology of WIBU-SYSTEMS AG. In order to run the programs, it is necessary to install the licensing system. You will find instructions for the installation bellow. For detailed information please refer to [CodeMeter Administrator Manual](#).

Our licenses are installed in a license container, which is linked to the computer (software-dongle). It is assumed that a license server is used on which the license container is installed and the license request is then created. The licenses cannot be transferred to another computer!

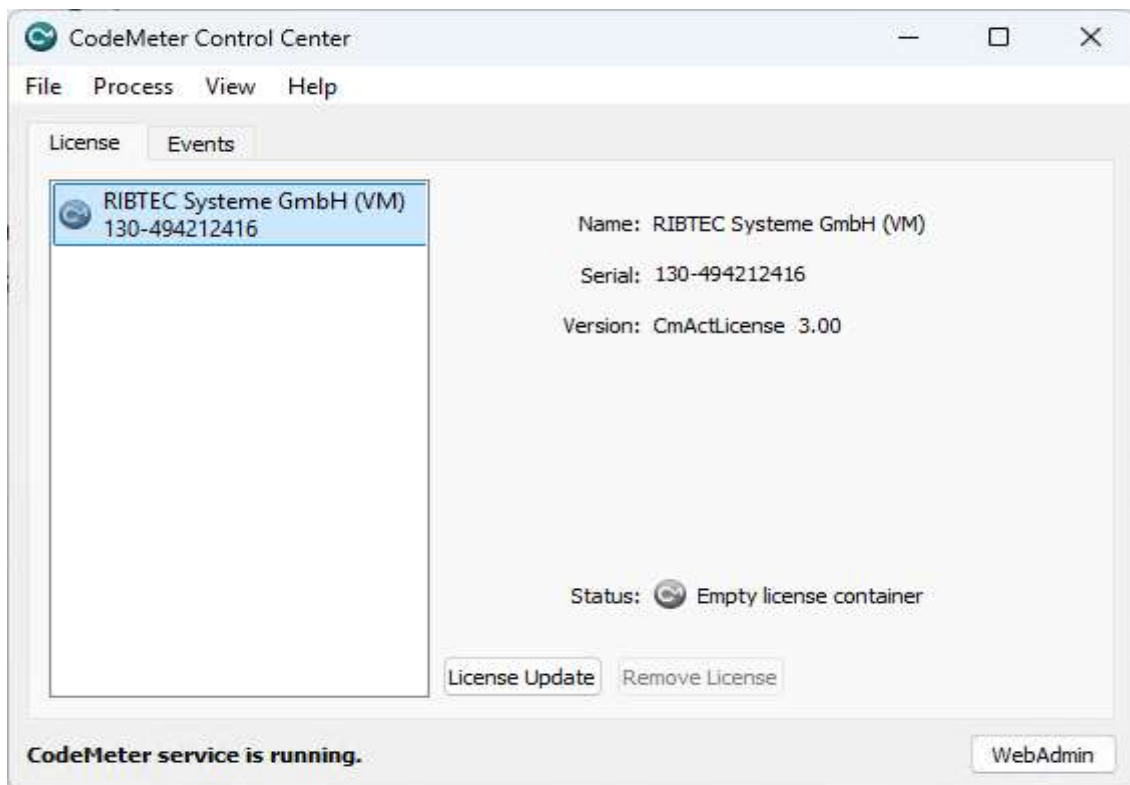
If you are planning to use several single-user licenses, the corresponding license containers must be purchased for a fee.

The following instructions apply regardless of whether you use the licenses for a single workstation or for floating licenses

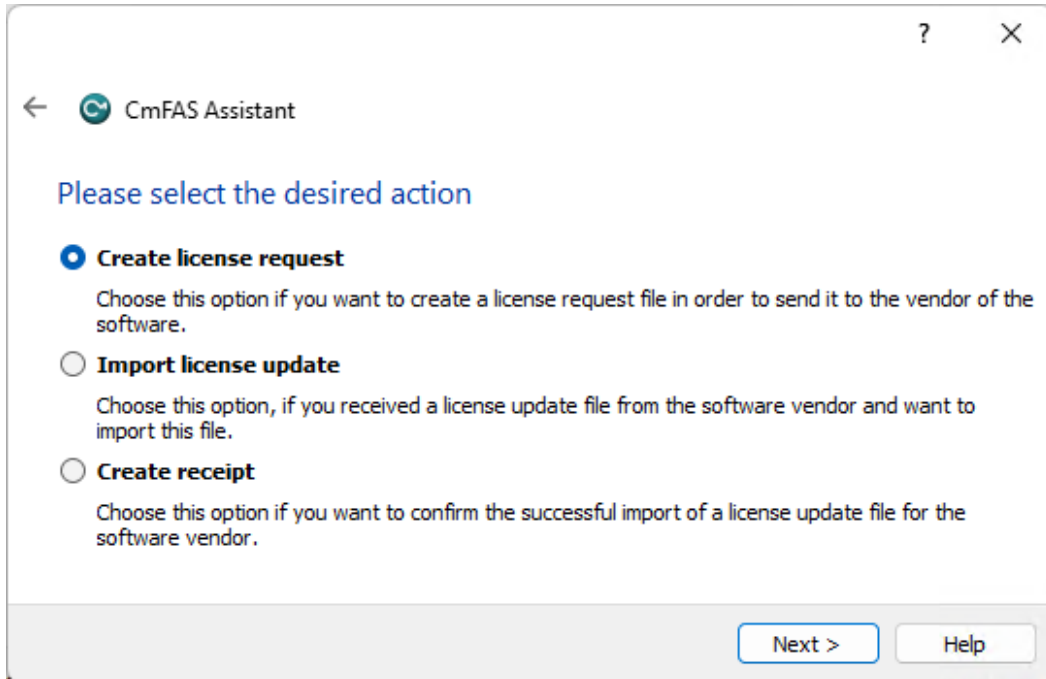
1. Please download the [CodeMeter User Runtime](#) from the WIBU-website und install it on your license server or workstation.

Please activate the feature Network Server in case of license server installation.

2. Start the CodeMeter Control Center
3. Install the RIBTEC license container by double-clicking the attached file RIBTEC\_Systeme\_GmbH.WibuCmLif into the Control center.
4. Choose the license container „RIBTEC Systeme GmbH“ in the list and click on the „License Update“ button.

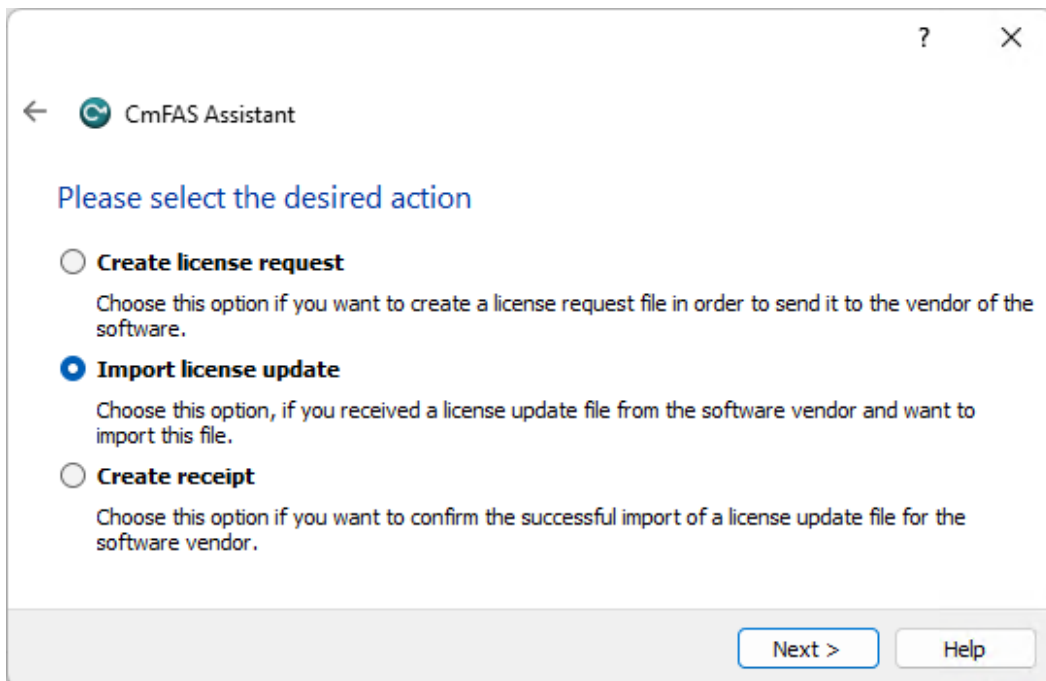


In CmFAS Assistant choose the option „Create license request “.

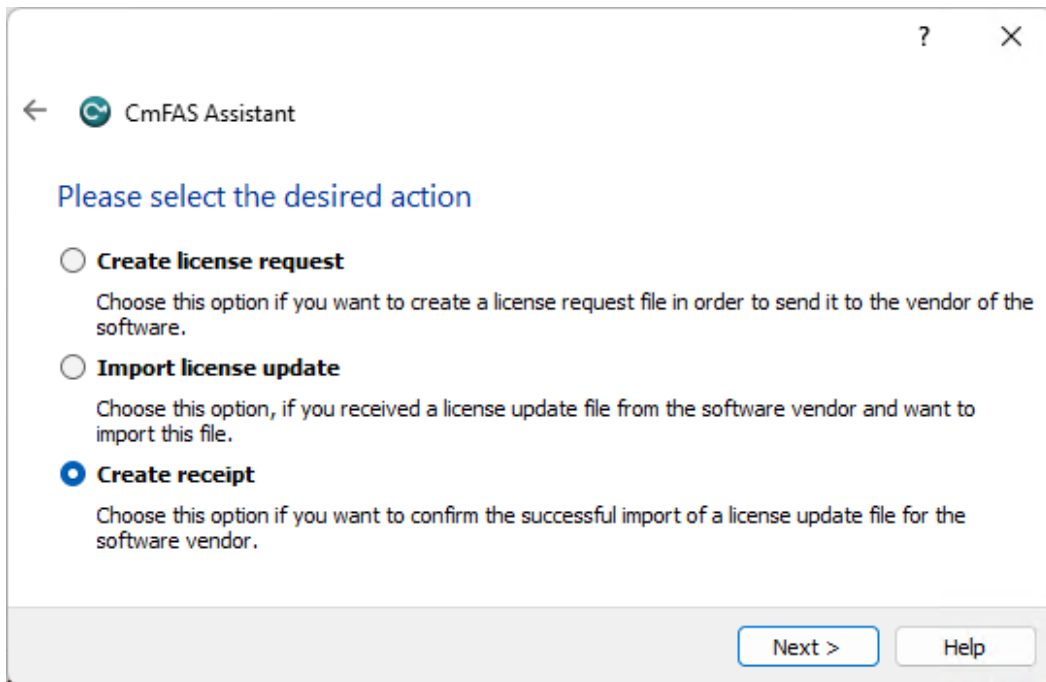


Next window shows the location and the file name of your license request file (\*.WibuCmRac). Default name is the serial number of your license container.

5. Please do not change the name of the file and send it together with your customer number by e-mail to [license@ribtec.de](mailto:license@ribtec.de). You will obtain a license update file (\*.WibuCmRaU) back by e-mail.
6. Now click again the „License Update“ button and load your license using the CmFAS Assistant by the option „Import license update“.



7. After update of your license container, please, start again the CmFAS Assistant and „Create receipt”.



This receipt confirms successful update of your licenses and makes future renewals of your licenses easier. Please send the receipt file (\*.WibCmRaC) to [license@ribtec.de](mailto:license@ribtec.de)

Your licenses are ready now to be checked by the RIBTEC® applications.

If you installed your licenses on a license server, it is necessary to install the Code Meter User Runtime on your workstations (step 1).